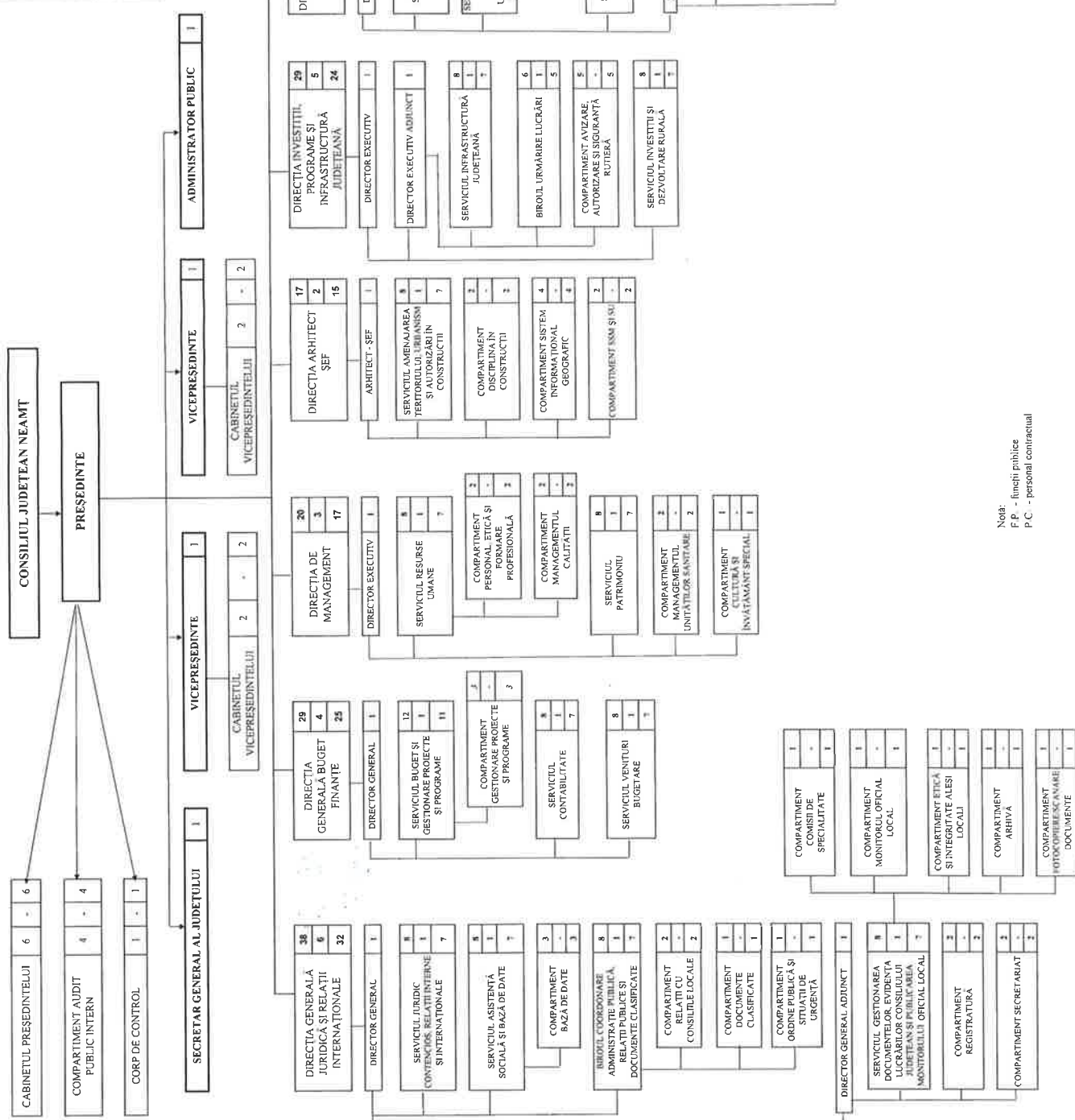


din care:		SECRETAR GENERAL AL JUDETELUI		VICEPRESEDINTE		ADMINISTRATOR PUBLIC		SECRETAR GENERAL AL JUDETELUI		CONDUCERE		EXECUTIE			
TOTAL	235	3	1	6	4	221	1	32	168	F.P.	-	172	1	27	144
		P.C.	1	6	4	49	-	5	44						



Nota:  
F.P. - funcții publice  
P.C. - personal contractual